

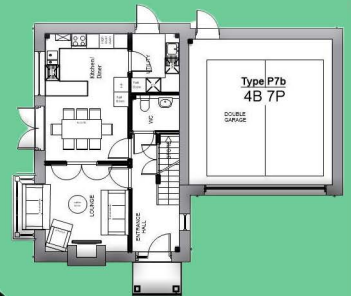
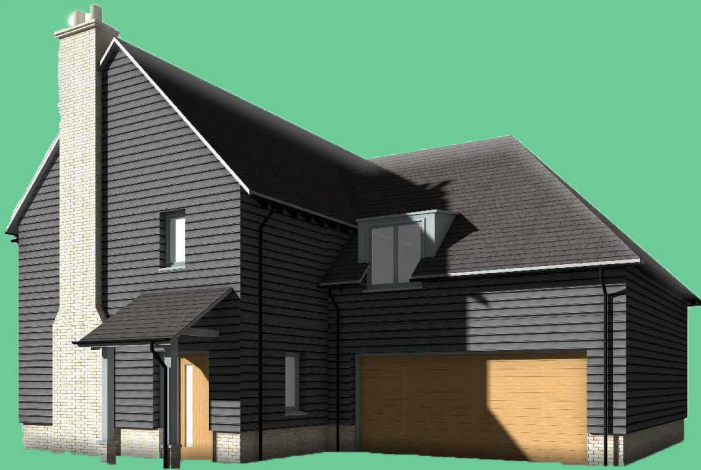
Bushmead Homes Public Exhibition

Land at 130 Middle Watch, Swavesey

We wish to cordially invite you to attend a drop-in event to browse our design proposals. There will be a chance to speak to the architects, the Planning consultant, Bushmead and bpha to answer specific queries and discuss our proposals.

Wednesday 13 February 2019

5:00pm-8:00pm *Bethel Baptist Church, 113 Middle Watch, Swavesey, CB24 4RP*



Bushmead

HOMES

As you may be aware, the site to the rear of 124-134 Middle Watch was granted outline planning consent in July 2017 for the erection of 70 residential dwellings to include 28 new affordable homes.

Whilst planning permission has been granted Bushmead Homes wish to consult on our reserved matters (detailed design) South Cambridgeshire District Council planning application prior to commencement of the development in the autumn of 2019.

We are here to work with your Parish Council to gauge your views, listen to your concerns and answer any questions you may have.

